

Notice Package

Proposed Shared Tower Inc. Wireless Radiocommunication Tower

995 Carmel Line, Cavan Monaghan, ON

File Number: STC0041

The Canadian telecommunications industry provides an essential service to Canadians, coast to coast. In response to significant rising demand for wireless voice and data services within the Township of Cavan Monaghan in the Carmel community and surrounding areas, Steward Logistics Inc on behalf of Shared Tower Inc. is proposing to construct a self-support installation to facilitate the colocation of all radio-communication carriers.

What kind of tower is proposed?

A 65-metre self-support tower, to be located adjacent to Carmel Line at the front of the property. A photo simulation of the proposed tower is shown in Appendix “A” of this notification package.

Compound Details

The tower and cabinets supporting the tower will be located in a vacant area at the front of the property. The compound dimensions are approximately 15m x 15m, as shown in the below extract from the survey plan of the proposed installation. The compound will be fenced with a 1.8m high chain link fence for security and safety. More details of the site layout are shown in the survey plan in Appendix “B” of this document.

- NOTES**
- (N1) PROPOSED STEEL SELF SUPPORT TOWER WITH LIGHTNING PROTECTION SYSTEM. PAINT COLOUR SUBJECT TO NAV CANADA REQUIREMENTS. ANTENNA NUMBER AND LOCATIONS TO BE DETERMINED. FOUNDATION DESIGN PENDING SOIL REPORT.
 - (N2) PROPOSED PREFABRICATED GALVANIZED STEEL WALK-IN RADIO EQUIPMENT CABINET ON CONCRETE PAD. FOUNDATION DESIGN PENDING SOIL REPORT.
 - (N3) UTILITY CONNECTION AND ROUTING TO BE DETERMINED BY QUALIFIED PERSONNEL IN CONSULTATION WITH LOCAL AUTHORITY.
 - (N4) REMOVE EXISTING TOPSOIL. PROOF ROLL SUBGRADE AND PLACE 300 mm GRANULAR A ACROSS COMPOUND AREA. FINISHED GRAVEL SURFACE TO BE MIN. 150 mm ABOVE EXISTING GRADE AND SLOPED AWAY FROM SHELTER AT MIN. 1% ON ALL SIDES TO PROVIDE ADEQUATE DRAINAGE.
 - (N5) PROPOSED 1.8 m HIGH CHAIN LINK SECURITY FENCE TOPPED WITH BARBED WIRE SURROUNDING COMPOUND.

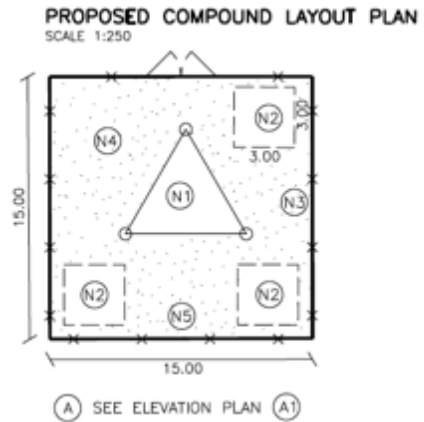


Figure 1: Compound Layout

Tower Location

Municipal address: 995 Carmel Line, Cavan Monaghan ON

Coordinates of tower compound: 44.113886, -78.423161

An aerial view of the location is illustrated below:

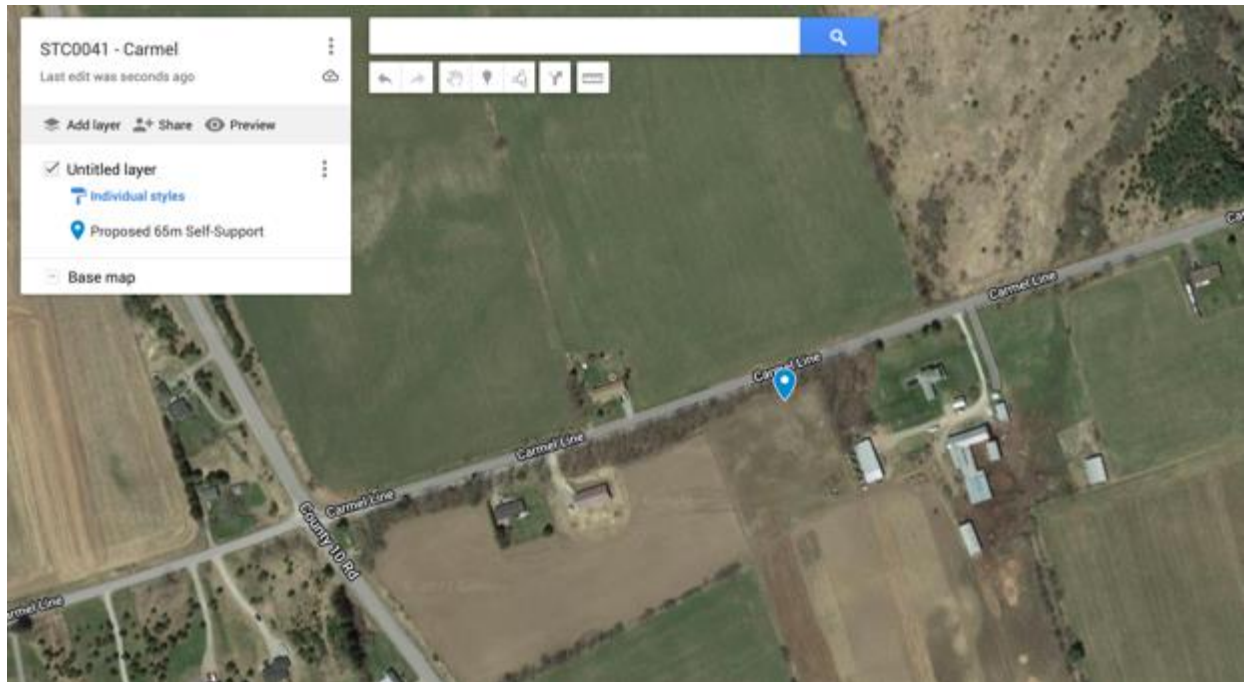


Figure 2: Tower location (illustrated by the blue marker)

Why is this installation needed?

Shared Tower has examined all available towers and non-tower locations in the vicinity at Carmel to assist with providing services to the Carmel Line and County Road No.10 area. Due to their lack of height, available equipment and location outside of the target service area, there were no viable structures to place antennas on or towers within a 5km radius to provide coverage for the community surrounding Carmel and commuters along County Road 10. Furthermore, an existing antenna installation would not be viable as the 5km service gap is too large for this type of installation to support coverage.

There is currently no opportunity for collocation since there is no existing telecommunications tower within the vicinity of Carmel Line and County Road No. 10. The closest structure supporting an antenna (red pin) is a Rogers equipment placed on a form water tower at 77 King Street East located approximately 4.5km away. The closest tower is a 99m Rogers and Telus installation at County Road 28 located southeast approximately 7.6km away from the proposed tower. Given the distances between these installations and from the proposed location, they are not located close enough to Carmel Line and County Road No. 10 to provide optimal cellular coverage.

The map shown below illustrates the location of existing tower sites in the vicinity of the proposed tower.

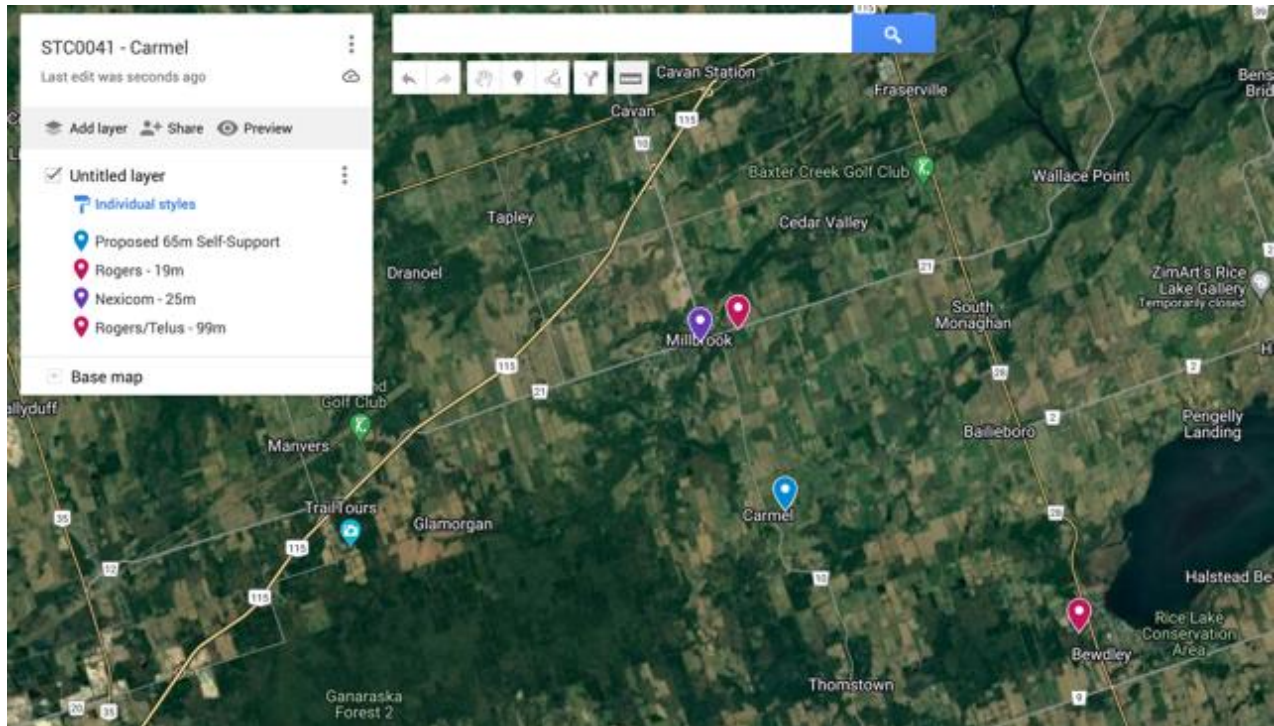


Figure 3: Existing telecommunications sites close to the proposed tower (blue marker)

Commenting on This Proposal

The public is welcome to request additional information or provide written comments to:

Steward Logistics, on behalf of Shared Tower Inc.
146 Thirtieth Street, Suite 100 Etobicoke, ON M8W 3C4
(647) 241-2788
municipal@stewardlogistics.com

Comments must be received no later than 5 pm (ET) on **Friday, September 9, 2022**.
Please reference our file number, **STC0041**, in your correspondence.

Municipal Contact Information

Karen Ellis
Director of Planning | Township of Cavan Monaghan
(705) 932-9334
kellis@cavanmonaghan.net



Innovation, Science and Economic Development Canada

Innovation, Science and Economic Development Canada (ISED), formerly Industry Canada, is the governing body for installations of this type and can be contacted at:

Eastern and Northern Ontario District Office
2 Queen Street East
Sault Ste. Marie ON P6A 1Y3
Tel: 1-855-465-6307
Fax: 705-941-4607
Email: SpectrumENOD-SpectreDENO@ised-isde.gc.ca

General information on wireless infrastructure: <http://www.ic.gc.ca/towers>

Local Land Use Requirements

Radio-communication tower/antenna systems are exclusively regulated by Federal legislation under the Radio-communication Act and administered by ISED. Therefore, Provincial, or municipal legislation, including zoning by-laws, do not apply to these facilities.

It is important to understand that ISED mandates proponents follow the local land use authority's telecommunications tower protocol, if applicable, but ultimate authority to approve or reject the construction of a new telecommunications tower rests exclusively with ISED.

In the case of this proposal, the framework for consultation is the Township of Cavan Monaghan – Policy for Antenna System, a copy of which may be requested at the Planning Department.

Health Canada's Safety Code 6 Compliance

Health Canada's role is to protect the health of Canadians, so it is the Department's responsibility to research and investigate any possible health effects associated with exposure to electromagnetic energy, such as that coming from cell phones and base stations. Health Canada has developed guidelines for safe human exposure to RF energy, which are commonly known as Safety Code 6. Safety Code 6 has been adopted by ISED and is included in their regulatory documents on radiocommunication licensing and operational requirements. ISED requires all proponents and operator to ensure that their installations and apparatus comply with the Safety 6 at all times.

Shared Tower Inc. attests that carrier(s) collocating on the telecommunication described in this notice package will comply with Health Canada's Safety Code 6 limits, as may be amended from time to time, for the protection of the general public including any combined effects of additional carrier co-locations and nearby installations within the local radio environment. For more information on Safety Code 6, please visit following Health Canada site at: www.healthcanada.gc.ca/radiation.

Engineering Practices

Shared Tower Inc. attests that the telecom structure as proposed for this site will be constructed in compliance with the applicable Canadian Standard Association (CSA) standards for telecommunications tower sites and comply with good engineering practices including structural adequacy.

Canadian Environmental Assessment Act

Shared Tower Inc. attests that the telecom structure as proposed for this site will comply with the Canadian Environmental Assessment Act. The Federal government revised the Canadian Environmental Assessment Act in July 2012. Only radiocommunication antenna and supporting structures that are part of or incidental to projects that are designated by the Regulations Designating Physical Activities or otherwise designated by the Minister of the Environment as requiring an environmental assessment are subject to the CEAA, 2012.

Transport Canada's Aeronautical Obstruction Marking Requirements

Shared Tower attests that the telecom structure described in this notification package will comply with Transport Canada / NAV Canada aeronautical safety requirements. When Transport Canada / NAV Canada have determined if any aeronautical safety features are required for the installation, such information will be made available for public review.

For additional detailed information, please consult Transport Canada at: <https://tc.canada.ca/en/corporate-services/acts-regulations/list-regulations/canadian-aviation-regulations-sor-96-433/standards/standard-621-obstruction-marking-lighting-canadian-aviation-regulations-cars>

Public Disclosure of Comments

Submissions received shall form part of ISEDC's Public Consultation Process under the Spectrum Management and Radiocommunications Client Procedures Circular CPC-2-0-03, Issue 5, and may be made public as part of a report issued to interested parties, the Municipality and ISEDC.

Appendix A: A Photo Illustration of the Proposed Tower



Figure 4: View from Carmel Line looking west

