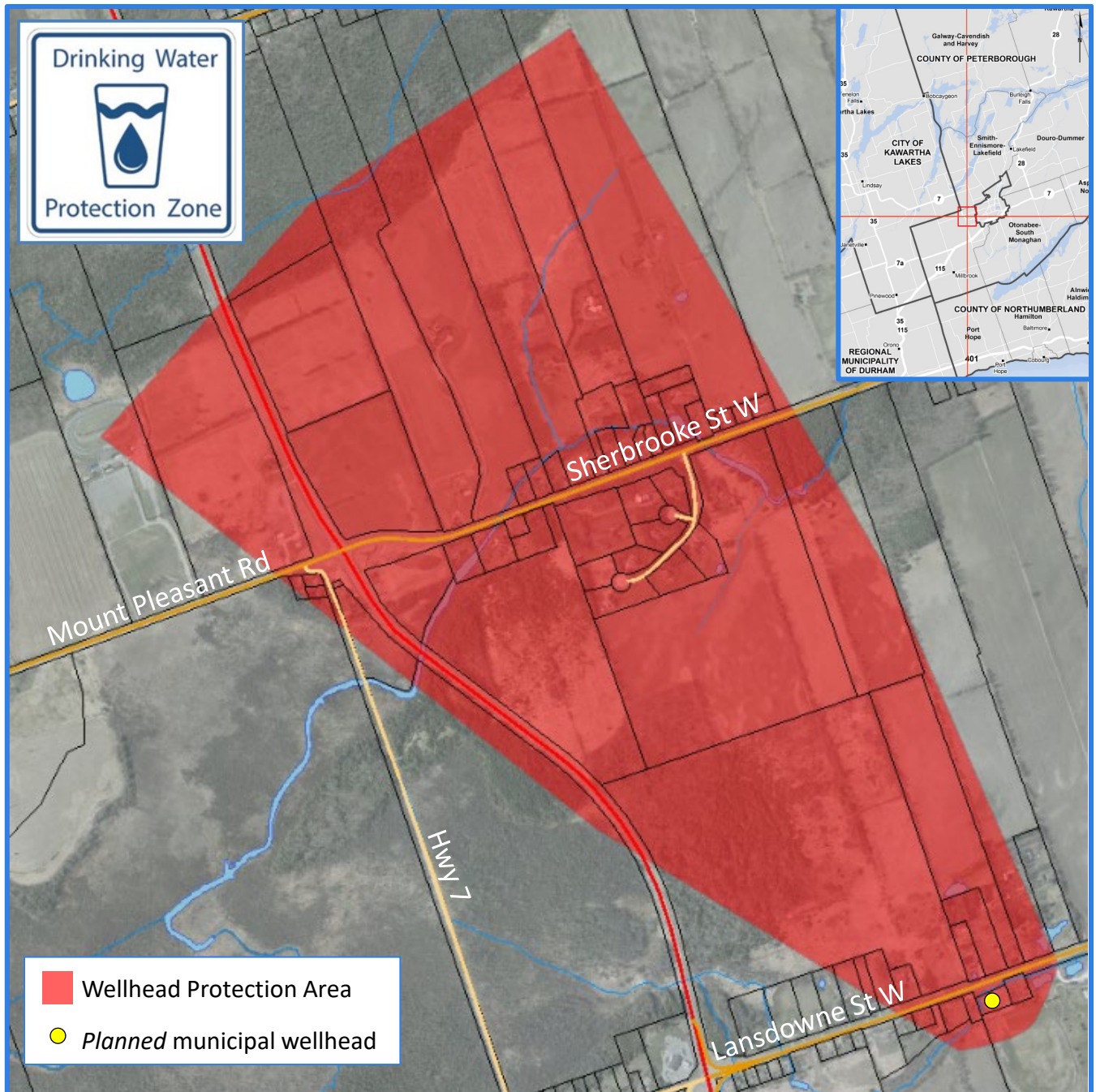


The *Clean Water Act* was developed to protect municipal, residential drinking water sources across the province from contamination and/or overuse by ensuring policies are in place to manage activities that may pose a drinking water threat. **Locally, these policies are included in the Trent Source Protection Plan and they apply within the red shaded area shown below.**



The **planned Lansdowne Municipal Well Supply Site** is one of 53 municipal drinking water system sites across the Trent Conservation Coalition Source Protection Region that is protected under the *Clean Water Act* and is 1 of 12 such sites in the Otonabee-Peterborough Source Protection Area.

Water Source	Groundwater
Owned by	Township of Cavan Monaghan

Data source: Trent Assessment Report

Activities that can pose a Threat to the municipal drinking water source



- ✓ Waste disposal and sewage systems
- ✓ Livestock grazing, pasturing, confinement
- ✓ Road salt use and snow storage
- ✓ Spreading or storing of agricultural materials (e.g. manure)
- ✓ Pesticide and fertilizer storage and use
- ✓ Liquid fuel storage (e.g. home heating oil)
- ✓ Chemical handling and storage


Contact us to find out how you can protect drinking water



Terri Cox
Risk Management Official and Inspector
t: 705-745-5791 x 219
f: 705-745-7488
tcox@otonabeeconservation.com



www.otonabeeconservation.com

With support provided by **Ontario** 

Otonabee Region Conservation Authority
250 Milroy Drive, Peterborough ON K9H 7M9