

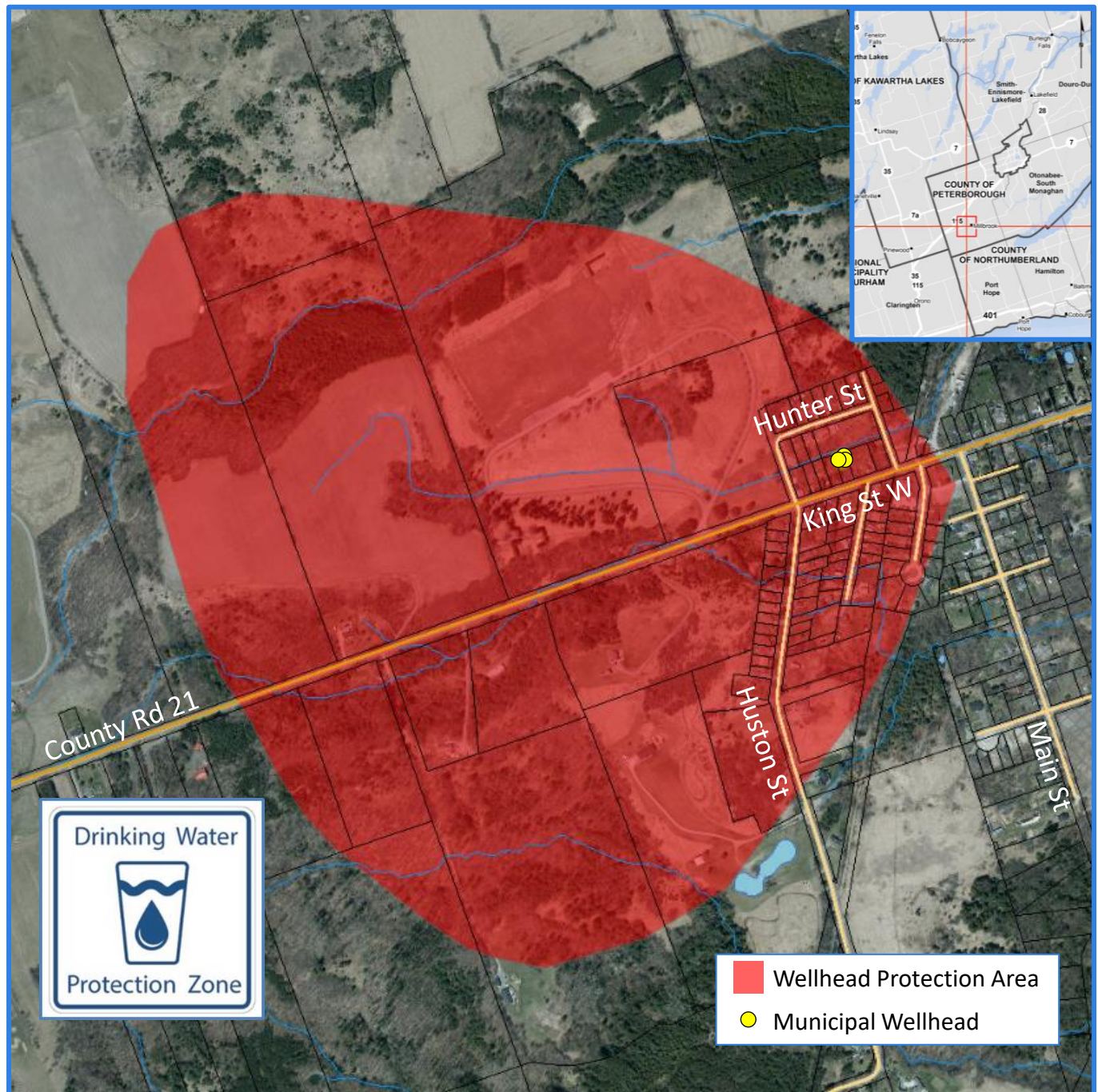
# DRINKING WATER SOURCE PROTECTION

ACT FOR CLEAN WATER

# Millbrook

Municipal  
Wellhead Protection Area

The *Clean Water Act* was developed to protect municipal, residential drinking water sources across the province from contamination and/or overuse by ensuring policies are in place to manage activities that may pose a drinking water threat. **Locally, these policies are included in the Trent Source Protection Plan and they apply within the red shaded area shown below.**



The **Millbrook Municipal Well System** is one of 53 municipal, residential drinking water systems in the Trent Conservation Coalition Source Protection Region that is protected under the *Clean Water Act* and is 1 of 12 such systems in the Otonabee-Peterborough Source Protection Area.

Water Source	Groundwater
Owned by	Township of Cavan Monaghan
Operated by	The City of Peterborough
Serviced Population	2,195 (approximately)
Annual Pump Rate	669 m <sup>3</sup> /day (average)
Well Depths	Well 1: 30 m (main production well) Well 2: 30 m (standby well) Well 3: 31 m
Aquifer Type	Confined overburden
Treatment System	Disinfection with sodium hypochlorite

Data source: Trent Assessment Report, Township of Cavan Monaghan

### Activities that can pose a Threat to the municipal drinking water source



- ✓ Waste disposal and sewage systems
- ✓ Livestock grazing, pasturing, confinement
- ✓ Road salt use and snow storage
- ✓ Spreading or storing of agricultural materials (e.g. manure)
- ✓ Pesticide and fertilizer storage and use
- ✓ Liquid fuel storage (e.g. home heating oil)
- ✓ Chemical handling and storage

Contact us to find out how you can protect drinking water



Terri Cox  
Risk Management Official and Inspector  
t: 705-745-5791 x 219  
f: 705-745-7488  
tcox@otonabeeconservation.com



[www.otonabeeconservation.com](http://www.otonabeeconservation.com)

With support provided by **Ontario**

Otonabee Region Conservation Authority  
250 Milroy Drive, Peterborough ON K9H 7M9